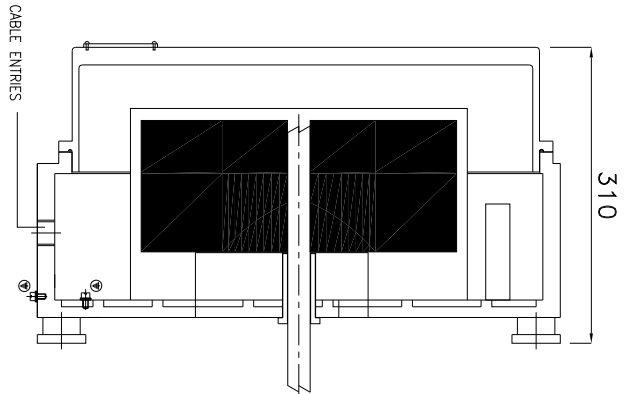


FRONT VIEW



SECTIONAL SIDE VIEW

Reference IS/IEC Standard as follows :

- 1 - FLAMEPROOF (Ex d) PROTECTION - IIA/IIb & IIC, IS/IEC 60079-1 (2007)
- 2 - INGRESS (IP) PROTECTION - IP-66, IS/IEC 60529 (2001).

Standard Specification :

- 1 - MATERIAL - CAST ALUMINIUM ALLOY
- 2 - FINISH - INSIDE & OUTSIDE LIGHT GREY EPOXY POWDER COATING SHADE No. 631 AS PER IS:5
- 3 - EARTHING - 1 No. INSIDE & 2 Nos. OUTSIDE M6 SIZE S.S./BRASS SCREWS WITH 2 Nos. PLAIN WASHER
- 4 - HARDWARE - STAINLESS STEEL
- 5 - GASKET - 'O' RING NEOPRENE RUBBER GASKET
- 6 - MOUNTING ARRGT. - AS SHOWN IN DRG.

Material / Components Specification :

- 1 - S.S. NAME CUM WARNING PLATE (WITH DESCRIPTION TITLE, CIMFR, PESO, SR. NO., GAS GROUP, RATING, BIS MARKING, WARNING STATUS, etc...)
- 2 - THE ELECTRO MAGNETIC BRAKE IS SUITABLE FOR UP TO 800 N/m (Newton Metre) Torque, Single Phase, 240V AC/DC (MAX.)
- 3 - CABLE ENTRIES - 2 Nos. M20 / 1/2" NPT / 3/4" ET EQUIVALENT CABLE ENTRIES FROM BOTTOM SIDE - REFER DRAWING
- 4 - CABLE GLAND - (Ex d) DOUBLE COMPRESSION TYPE CABLE GLAND OF 'SUDHIR' MAKE
- 5 - STOPPING PLUG - (Ex d) STOPPING PLUG OF 'SUDHIR' MAKE

Specification :

Break Rating	: Max. upto 800 N/m (Newton Metre) Torque,
Input Current	: 1-3 Amp.
Input Voltage	: 415 Volts
Output Voltage	: 190-220 Volts

Fitting OPTIONS:

- 1) MATERIAL CONSTRUCTION : STAINLESS STEEL
- 2) VOLTAGE : 240/415V AC
- 3) CABLE GLAND & PLUG : BRASS/S.S./ALUMINIUM
- 4) PAINT SHADE : 632/355/7031/7032, etc... (As per Standard)
- 5) MOTOR : 'CLIENTS' / 'SUDHIR' SCOPE
- 6) CABLE ENTRIES : MAX. 4 Nos. UP TO M25/ 3/4" NPT/ 1" ET SIZE

NOTE :

- COMPONENT LAYOUT IS TENTATIVE RELOCATION OF PARTS & COMPONENTS IS POSSIBLE AT THE TIME OF ACTUAL MANUFACTURING.
- OVERALL DIMENSIONS ARE ±10mm

REV.	DATE	DESCRIPTION	DRN.	CHD.	APPD.	SCALE	Cat. No.	CIMFR CERT. No.	PESO No. :	BIS LICENCE No. :
							RCP/SC/2027A			
MODEL No.: RCP/2027A TITLE : FLAMEPROOF-WEATHERPROOF ENCLOSURE FOR ELECTRO MAGNETIC BRAKE							SUDHIR SWITCHGEARS PVT. LTD. 130, MULBARI SAMACHAR MARG, MULBARI - 400 023			
DRN. JMSHW APPD. JMSHW SHEET 1 OF 1 N. T. S. REV.-0							Dt. 14/11/2014 Dt. 02/03/2020			